



K70 STOP, TURN OR REVERSE LAMP INSTALLATION MANUAL

Safety

- This document provides the necessary information to allow your TecNiq warning lamp to be safely installed. Before installing this product, the installer must fully read and understand this manual. Important information is contained within which could prevent serious injury or death.
- Installer must have a working understanding of vehicle service procedures, automotive electronics, and electronic systems.
- Installer is responsible to insure that no vehicle components or vital parts are inadvertently damaged during the drilling process.
- Avoid installation of any wires or equipment in the deployment area of the air bag or safety restraint systems. Installer assumes full responsibility for determining proper mounting locations which are in compliance with manufacturer recommendations.
- Use only soap and water to clean outer lens. Certain chemical solvents can damage lens surface resulting in a loss of performance and appearance. Damaged lenses should be replaced immediately.

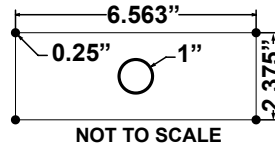
- This is a high performance electrical device. All wires and conductors must be sized to carry a minimum of 125% of the maximum operating current of the light system and fused at the battery to carry that load. It is the sole responsibility of the installer to choose appropriate wiring design for the vehicle.

IMPORTANT: THIS LAMP IS DESIGNED FOR 9 – 15 VOLTS AND DRAWS A CURRENT OF 0.4 AMP. ALL SIGNAL AND POWER WIRES MUST BE WITHIN THIS VOLTAGE RANGE FOR PROPER LONG TERM OPERATION.

FAILURE TO FOLLOW THESE INSTRUCTIONS COULD RESULT IN DAMAGE TO THE VEHICLE, SERIOUS INJURY OR DEATH.

Installation

- 1) Using a straight edge, measure the appropriate distance from wire hole (see below). Take extreme care to ensure that the lamp will not interfere with the function of any other device on the vehicle and be aware of any objects on the opposite side of the mounting surface. Check all measurements carefully before cutting mounting holes.
- 2) Following the template dimensions, drill or punch a 1" wire hole, drill 4 - 0.250" diameter screw anchor holes
- 3) Using TecNiq rotation-lock anchors, insert anchors with pliers and rotate anchors in holes with to properly engage lamp base.
- 4) Connect lamp wires to the vehicle according to the wire connection table. Use appropriate sized wire and fuse the +12V lead. Test lamp function before tightening to the vehicle. Make sure unused wire ends are properly insulated.



- 5) Use 4 #8 SS screws included, tighten the lens, lamp body and body gasket to the vehicle surface. Visually check to insure that good contact is made between rubber gasket and vehicle body.

Wires	
	Function
Red	12 Volt Power High Intensity
Black	Ground
Yellow	12 Volt Power Low output tail or marker light

* In many installations the yellow wire is unused and may be looped or cut, grounding of the open wire is not necessary.



K70 STOP, TURN OR REVERSE LAMP INSTALLATION MANUAL

Safety

- This document provides the necessary information to allow your TecNiq warning lamp to be safely installed. Before installing this product, the installer must fully read and understand this manual. Important information is contained within which could prevent serious injury or death.
- Installer must have a working understanding of vehicle service procedures, automotive electronics, and electronic systems.
- Installer is responsible to insure that no vehicle components or vital parts are inadvertently damaged during the drilling process.
- Avoid installation of any wires or equipment in the deployment area of the air bag or safety restraint systems. Installer assumes full responsibility for determining proper mounting locations which are in compliance with manufacturer recommendations.
- Use only soap and water to clean outer lens. Certain chemical solvents can damage lens surface resulting in a loss of performance and appearance. Damaged lenses should be replaced immediately.

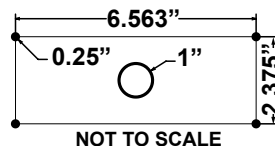
- This is a high performance electrical device. All wires and conductors must be sized to carry a minimum of 125% of the maximum operating current of the light system and fused at the battery to carry that load. It is the sole responsibility of the installer to choose appropriate wiring design for the vehicle.

IMPORTANT: THIS LAMP IS DESIGNED FOR 9 – 15 VOLTS AND DRAWS A CURRENT OF 0.4 AMP. ALL SIGNAL AND POWER WIRES MUST BE WITHIN THIS VOLTAGE RANGE FOR PROPER LONG TERM OPERATION.

FAILURE TO FOLLOW THESE INSTRUCTIONS COULD RESULT IN DAMAGE TO THE VEHICLE, SERIOUS INJURY OR DEATH.

Installation

- 1) Using a straight edge, measure the appropriate distance from wire hole (see below). Take extreme care to ensure that the lamp will not interfere with the function of any other device on the vehicle and be aware of any objects on the opposite side of the mounting surface. Check all measurements carefully before cutting mounting holes.
- 2) Following the template dimensions, drill or punch a 1" wire hole, drill 4 - 0.250" diameter screw anchor holes
- 3) Using TecNiq rotation-lock anchors, insert anchors with pliers and rotate anchors in holes with to properly engage lamp base.
- 4) Connect lamp wires to the vehicle according to the wire connection table. Use appropriate sized wire and fuse the +12V lead. Test lamp function before tightening to the vehicle. Make sure unused wire ends are properly insulated.



- 5) Use 4 #8 SS screws included, tighten the lens, lamp body and body gasket to the vehicle surface. Visually check to insure that good contact is made between rubber gasket and vehicle body.

Wires	
	Function
Red	12 Volt Power High Intensity
Black	Ground
Yellow	12 Volt Power Low output tail or marker light

* In many installations the yellow wire is unused and may be looped or cut, grounding of the open wire is not necessary.