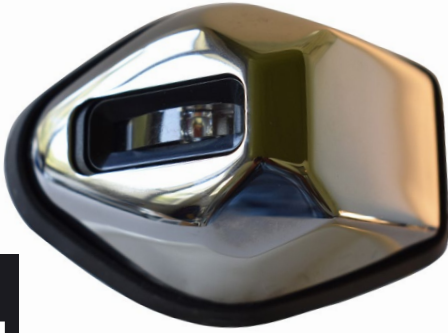


TecNiq's NEW M21 Side Mounted Navigation Light has been designed to compliment today's style and craftsmanship of top boat builders across the industry. Constructed to resist impacts, overheating, and backed by TecNiq's lifetime guarantee - the M21 checks the boxes for sleek, stylish navigation light.



M21

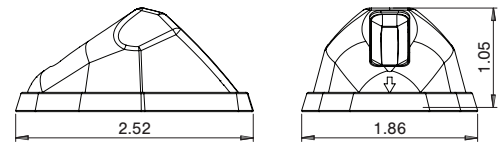
**SIDE MOUNTED
NAVIGATION LIGHT**

Technical features

- ✦ Includes 316 stainless steel cover
- ✦ Active overheat protection
- ✦ IP68 rated for Dust & Waterproof
- ✦ Impact resistant lens
- ✦ Reliable 100,000 hour life performance

Specifications

Dimensions:	2.52" x 1.86" x 1.05"
LEDs:	1
Voltage:	9-14V DC
Current:	0.39A - 0.51A – Green 0.39A - 0.51A – Red
Connector:	9"
Mounting:	mounts with just (2) screws
LED colors:	Red (port side), Green (starboard side)



California Proposition 65

WARNING: This product can expose you to chemicals including lead, which is known to the State of California to cause cancer, birth defects or other reproductive harm

Part Numbers	Description	Std	Connector
M21-GSS0-1	Navigation Light Side Mount Stainless Cover Starboard Side w Pigtail	10	Pigtail (5.5")
M21-GSSD-1	Navigation Light Side Mount Stainless Cover Starboard Side w xT06-2S	10	Pigtail (5.5")
M21-RSP0-1	Navigation Light Side Mount Stainless Cover Port Side w Pigtail	10	Pigtail (5.5")
M21-RSPD-1	Navigation Light Side Mount Stainless Cover Port Side w xT06-2S	10	Pigtail (5.5")

