

The **TecNiq Steelhead Line** was engineered with the most extreme conditions in mind; 100% waterproof, vibration resistant, IP68 rated, and backed by the TecNiq guarantee. With flood or spot light lens options, and ability to choose from varying lumens, resulting in a heavy duty work lamp that surpasses the competition in performance and quality. Available in Red, Green, Blue, Amber, and White.



**P04**

**STEELHEAD HEAVY  
DUTY WORK LIGHTS**

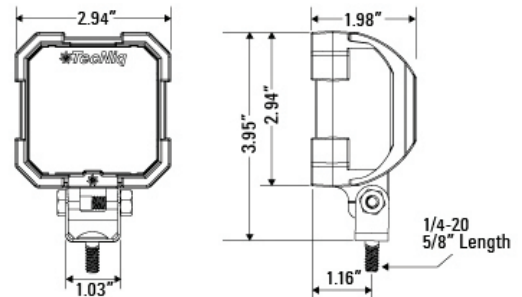


**Technical features**

- ✦ Models include Flood or Spot light projection
- ✦ IP68 Rated – water & dust proof
- ✦ Proprietary thermal management provides powerful performance in a small package
- ✦ Designed for the most demanding task illumination applications, in the most extreme environments

**Specifications**

<b>Dimensions:</b>	3"x 4"x 2" (4 LED)
<b>LEDs:</b>	4
<b>Voltage:</b>	9 - 30VDC
<b>Connector:</b>	9" Pigtail
<b>Mounting:</b>	Mounts with 5/8" mounting bolt and hardware (included)
<b>Lumens:</b>	1100 Lumens (4 LED)



**California Proposition 65**

*WARNING: This product can expose you to chemicals including lead, which is known to the State of California to cause cancer, birth defects or other reproductive harm*

Part Numbers	Description	Std Pk	Connector
P04-WBFP-1	SteelHead Flood Lamp 2 LED Black Finish Pigtail wires	4	Sheathed Pigtail
P04-WBSP-1	SteelHead Spot Lamp 2 LED Black Finish Pigtail wires	4	Sheathed Pigtail
P04-WWFP-1	SteelHead Flood Lamp 2 LED White Finish Pigtail wires	4	Sheathed Pigtail
P04-WWSP-1	SteelHead Spot Lamp 2 LED Black Finish Pigtail wires	4	Sheathed Pigtail

